



From the Principal's Desk



**Bramfield Park
Primary School**

**Yule Street
Maddington,
WA 6109**

**Phone:
(08) 9217 8600**

**Facebook:
@BramfieldParkPS**

**Website:
[www.bramfieldparkps
.wa.edu.au](http://www.bramfieldparkps.wa.edu.au)**

Dear families,

I trust you enjoyed your Labour Day long weekend. Labour Day in Australia commemorates the achievements of organised labour to implement the eight-hour day in the middle of the nineteenth century when previously workers were required to work 10 - 12 hours a day for six days a week. I am sure this is something we can all appreciate!

Year 5/6 Camp

Our 72 campers all happily headed off yesterday ready for a week of fun activities. Going on camp always provides a wonderful opportunity for the students and teachers to get to know each other better, in an environment away from school. A big thank you to Mr Lake for all his organisation and to the other staff for their assistance and supervision at Camp this week; Mr Herbert, Mr Pollacchi, Mrs Powell, Mrs Viner and Miss Mitchell.

Creative Schools Project

Mrs Viner has been successful in applying for Bramfield Park to become part of the Creative Schools Project. This project is entirely funded by the Department of Education and the Department of Local Government, Sport, and Cultural Industries. The funding gives our school access to two Creative Practitioners to work with two classes for 16 weeks in Term 2 and 3 (8 sessions per term). The Creative Practitioner will co-design and co-deliver a creative learning project in collaboration with the classroom teacher. The creative learning project would cover an area of mainstream curriculum in a student-led, engaging, creative way. We are excited that Ms Sneddon's Year 1 class and Mr Pollacchi's Year 5/6 class will be involved in this project.

Crazy Hair Day

Thank you to our students and staff who came to school with some crazy hair last Friday! This day was a fundraiser for World Hearing Day, to support the two students in our school with hearing loss. The school will make a donation of \$100 to The Deafness Foundation.

Parents and Citizens' Association (P&C)

Our Annual General Meeting (AGM) was held two weeks ago and unfortunately not all office bearer positions were filled. We have another meeting next Wednesday, 15 March, and we would like to see any parents / grandparents that are available to help this year at fundraising events, playgroup, book club or the canteen. It is important that we start to have new parents join our team so if you are interested in volunteering, please come to the meeting, or get in touch with our P&C through the Office.

Harmony Week

Harmony Week is the celebration that recognises our diversity and brings together Australians from all different backgrounds. At Bramfield Park we certainly have many cultures so we will celebrate this diversity on Harmony Day which will be Tuesday 21 March. (Thursday 23 March for Kindy 1 students).

Students are encouraged to come to school in cultural dress, or orange, which is the colour of harmony. Students can also bring in a plate of cultural food to share with their class. Parents can you please place a label on the shared plate with the ingredients that have been used. Parents are welcome to attend a short assembly first thing in the morning.

Thought for the week... Scientists have determined it takes approximately 400 repetitions to create a new synapse in the brain - unless it is done with PLAY, in which case, it takes between 10 and 20 repetitions. Dr Karyn Purvis

Reminders from the Front Office

- * *Contributions are now due. They can be paid via EFT or cash in the front office*
- * Did you know that you can SMS the school if your child is going to be absent? Just send an SMS to 0438 937 335. Alternatively, you can call the front office or send the absence through on Connect.

Say Hello!!

Hello Bramfield Park Primary School,

My name is Harriet Calow and I am currently in my first year of Early Childhood Education at Notre Dame University in Fremantle. I will be completing my first practicum in the Pre-Primary class every Wednesday for the next 10 weeks.



A little bit about myself: I live with my mum, dad, two sisters and pet dogs, cats, chickens and sheep. I love animals, movies, being creative and being outdoors! I have always dreamed of being an early childhood teacher and I am very excited to help children to learn and grow!

I am very excited and grateful to be a part of your school community! I look forward to meeting you all.

Coming Up

10 Mar	Breakfast Club
	Frozen Friday
15 Mar	Breakfast Club
16 Mar	Close the Gap Day
17 Mar	Breakfast Club
	Frozen Friday
21 Mar	Harmony Day
22 Mar	Breakfast Club

Message de Madame Dye,



Bonjour tout le monde,

French Club

In French Club we have been working on painting and decorating a windmill 'un moulin' for the French garden. Any students learning French who are keen to help with this project, come along and join us at 1st break on Friday after you have eaten.

Languagenut

Languagenut logins and passwords have been updated for this year. The students have been learning how to log in to Languagenut in their French classes and there has been a note sent home with their log in details so they can access Language nut at home. I look forward to adding our Languagenut leader board to the next newsletter.

Au revoir! À bientôt!

Madame Dye



Chaplain's Corner

The world is changing rapidly. Problem solving, emotional understanding, and knowing how to interact well with others are increasingly important skills for success in today's world. We need to encourage children to think first, rather than doing the first thing that comes to mind.

Solving problems means making choices, it is an important skill to learn. Typically, effective problem-solving skills result in happier, more confident, and more independent individuals. When children tackle problems on their own, or in a group, they become resilient. They learn to look at challenges from a fresh perspective. You can help your child solve problems by going through the following steps.



PATHS Problem-Solving Model

1. STOP and CALM DOWN.
2. Identify the PROBLEM.
3. Identify the FEELINGS.
4. Decide on a GOAL.
5. Think of lots of SOLUTIONS.
6. Think about the CONSEQUENCES.
7. Choose the BEST solution.
8. Make a good PLAN.
9. TRY your plan.
10. EVALUATE—how did you do?
11. If you need to, TRY AGAIN.

Cultural Awareness with Aunty Josie

16th March is National Close the Gap Day. In 2006, more than 40 national organisations joined together to form the Close the Gap campaign, with the intention to improve the health of Aboriginal and Torres Strait Islander people.



Story Dogs

Is a Literacy Charity and our mission is to make reading fun for children, so that they become confident lifelong readers.

When children read to a dog the outcomes are amazing:

- They have FUN
- They are not judged
- Their focus improves
- Their reading skills increase
- Their confidence soars



Our Primary School would like

to start this reading support program in our school. However to do this we need to find suitable volunteers.

- Do you have one morning free each week?
- Do you have a calm, obedient and gentle dog?

If yes, please consider joining the Story Dog Team

We work with children, generally in Year 2, and show them how much fun reading can be, while improving their reading skills. Classroom teachers select 4-5 students, and each student has an individual session with the Dog Team, lasting about 20 minutes.

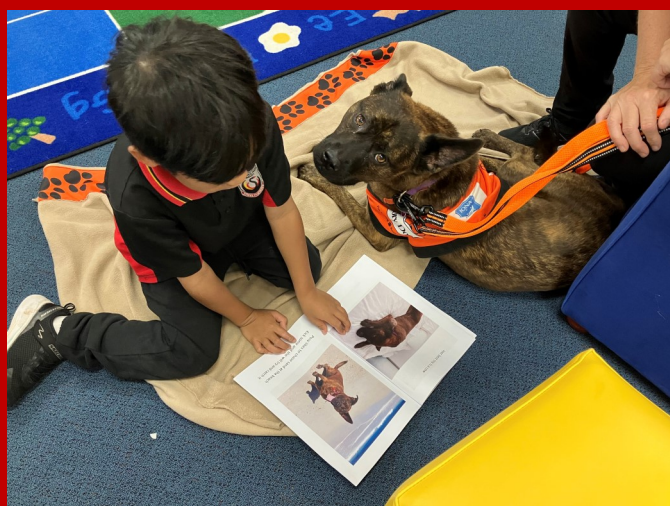
Story Dogs provides the dog assessment, all the training for the handler and a starter kit. If you have a suitable dog and the time, please consider making a real difference in the lives of our children.

For more information please visit our website

www.storydogs.org.au

or contact Armadale Coordinator Pat Foster

patf@storydogs.org.au



SCHOOL CLEAN UP DAY

Students and teachers *stepped up to clean up* on Friday for **Schools Clean Up Day**. They were among hundreds and thousands of other Aussies showing they care by taking practical action to improve their environment. A big *thank you* goes out to the teachers and students that spent some time thinking about and contributing towards sustainable practices, and for exploring the mindset of sustainability being “everyone, all the time!” You can find more valuable information, reports and activities to do at home through the following links:

[Learning@Home With Cool Australia - Cool Australia](#)

[Clean Up Australia Blog](#)



Crazy Hair Day

Thank you to everyone who participated in Crazy Hair Day.
In recognition of World Hearing Day.



NAPLAN

The annual assessment for Year 3 and 5 students is scheduled for Weeks 7, 8 and 9. The timetable for testing is below. Please make sure your child arrives at school on time to ensure they are ready to start with the class.

Year 3

Wednesday 15th March	Thursday 16th March	Friday 17th March	Monday 20th March
9.00am Writing – 40 mins (Paper)	9.00am Reading – 45 mins (Online)	9.45am Conventions of Language – 45 mins	9.00am Numeracy – 45 mins (Online)

Year 5

Wednesday 15th March	Thursday 16th March	Friday 17th March	Monday 20th March
9.00am Writing – 42 mins (Online)	9.00am Reading – 50 mins (Online)	9.00am Conventions of Language – 45 mins (Online)	9.00am Numeracy – 50 mins (Online)

NAPLAN is a national literacy and numeracy assessment that students in Years 3, 5, 7 and 9 sit each year. It is the only national assessment all Australian students have the opportunity to undertake.

NAPLAN assesses the literacy and numeracy skills that students are learning through the school curriculum and allows parents/carers to see how their child is progressing against national standards and over time.

NAPLAN is just one aspect of a school's assessment and reporting process. It doesn't replace ongoing assessments made by teachers about student performance, but it can provide teachers with additional information about students' educational progress.

Schools have transitioned from paper-based to computer-based assessments. All Year 3 students will continue to complete the writing assessment on paper.

Online NAPLAN tests provide more precise results and are more engaging for students. One of the main benefits is tailored (or adaptive) testing, where the test presents questions which may be more or less difficult depending on a student's responses.

Tailored testing allows a wider range of student abilities to be assessed and measures student achievement more precisely. A student's overall NAPLAN result is based on both the number and complexity of questions they answer correctly. Your child should not be concerned if they find questions challenging; they may be taking a more complex test pathway.



P&C News



Fundraising With Garden Bulbs & Gifts



Bramfield Park Primary School

**Premium Quality WA supplied Bulbs & Gifts
From Tulips With A Difference**

Finish Date: 31st March 2023

Order Forms Available From school office or

Co-ordinator - Sheree Sneddon 9217 8600



SUPPORT YOUR COMMUNITY & SAVE

The P and C would like your support in this year's Garden Bulbs and Gifts Fundraiser. All order forms are due back to school by **Friday the 31st of March**. Order forms will be given out to students this week, there will be 1 order form per family. **Only correct change will be accepted.**

Thank you in advance for your generous support.

Ms Sneddon



**BRAMFIELD PARK PRIMARY SCHOOL
P&C PRESENTS:**

ANNUAL EASTER RAFFLE



**Please complete your tickets below and
return to the office with correct money in a
sealed envelope. Each ticket is only \$1**

Prizes will be drawn Thursday 6th April



**We are also seeking donations of Easter
eggs from our wonderful families for the
prizes. It's thanks to these generous
donations that our P&C is able to provide
support to the school for our students.**



Community Notices

LEAP

Lesmurdie Enrichment and Acceleration Program
Mathematics and Science



APPLY NOW FOR YEAR 7, 2024

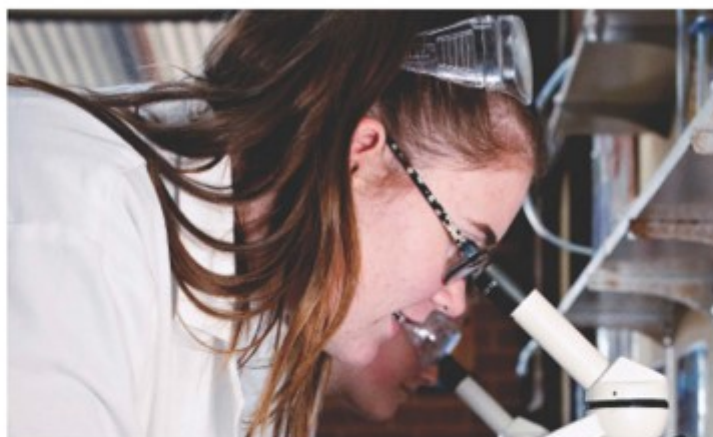
The Lesmurdie Enrichment and Acceleration Program (LEAP), an Approved Specialist Program in Science and Mathematics for Year 7 to 10 students at Lesmurdie Senior High School, gives your child the opportunity to explore their talents and extend their learning at an advanced level. If your child is entering Year 7 in 2024, they are eligible for selection. Testing will take place at Lesmurdie Senior High School on

Saturday, 25 March 2023:

- 9.00 - 10.30am, or
- 11.30 - 1.00pm

Only students who have completed and returned the LEAP 2024 application form are eligible to sit the test. Information and application forms are available at lesmurdie.wa.edu.au. Applications open on **Monday 20 February** and close on **Tuesday 14 March**.

A Parent Information video will be available on our website from 5.00pm **Tuesday 21 February, 2023**



For more information, go to the website lesmurdie.wa.edu.au or contact Samantha Sharman at Lesmurdie Senior High School at samantha.sharman@education.wa.edu.au or on 9291 1200.

**APPROVED SPECIALIST PROGRAM IN
MATHEMATICS AND SCIENCE**

Thriving in a nurturing environment



Community Notices



Child and Parent Centre
East Maddington



Child and Parent Centre – East Maddington Online Triple P Seminar Series



Power of Positive Parenting

Bookings essential

- Having reasonable expectations
- Looking after yourself as a parent
- Ensuring a safe engaging environment
- Creating a positive learning environment

When: Monday 13th March 2023

Time: 8.00pm – 10.00pm

Venue: **ONLINE - WEBEX**

Please contact CPC East Maddington to register and we will provide you with login details.

Telephone: 9452 7882

Email: CPCEastMaddington@centrecare.com.au



Raising Confident Kids

Bookings essential

- Having healthy self esteem
- Being a good problem solver
- Becoming independent
- Having good communication and social skills

When: Monday 20th March 2023

Time: 8.00pm – 10.00pm

Venue: **ONLINE - WEBEX**

Please contact CPC East Maddington to register and we will provide you with login details.

Telephone: 9452 7882

Email: CPCEastMaddington@centrecare.com.au



Raising Strong and Resilient Kids

Bookings essential

- Developing coping skills
- Recognising and accepting feelings
- Dealing with negative feelings
- Dealing with stressful life events

When: Monday 27th March 2023

Time: 8.00pm – 10.00pm

Venue: **ONLINE - WEBEX**

Please contact CPC East Maddington to register and we will provide you with login details.

Telephone: 9452 7882

Email: CPCEastMaddington@centrecare.com.au

Supported by



In partnership with

