



# BRAMFIELD PARK PRIMARY SCHOOL NEWSLETTER

Wednesday 9 May, 2018



## STEM



## New kindy playground



## French Cafe



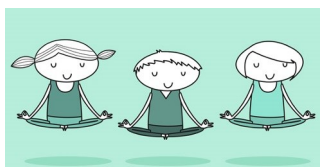
Bramfield Park Primary School Yule Street MADDINGTON WA 6109

T: (08) 9459 6401 F: (08) 9493 3009 E: [bramfieldpark.ps@education.wa.edu.au](mailto:bramfieldpark.ps@education.wa.edu.au) W: [www.bramfieldparkps.wa.edu.au](http://www.bramfieldparkps.wa.edu.au)

Dear parents and caregivers,

Welcome back for Term Two. I hope you all had an enjoyable break and took some time to stop and enjoy the sunshine, particularly in the first week, over the holidays. Our lives are always so busy so taking a moment to stop and focus on yourself, your family, and your children can reenergise you for the next moment, day, or week.

**Mindfulness** is a focus area at Bramfield Park where staff and students are given the opportunity to pay attention or focus, usually on the breath, to allow the mind to see things clearly and accurately. Being mindful can also improve behaviour, invoking a 'Stop and look before you act' technique. Research suggests there are many positives to practicing Mindfulness as it can enhance the relaxation



response and create an awareness of our emotions, enabling us to react to situations with more control.

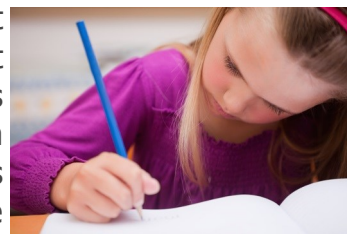
## Bike Shed

It is great to see students riding their bikes and scooters to school. While our Bike Shed is locked during the day, it is essential that you also lock up your bike or scooter to the racks. This will ensure security for those times before school and just before the end of the day when the Bike Shed is unlocked.

## NAPLAN Online

Next week our Year 3 and Year 5 students will sit the National Assessment Program for Literacy and Numeracy (NAPLAN). This year, for the first time, students will be able to sit assessments online. Bramfield Park has completed all the school readiness and practice tests online to ensure we are ready for next week. NAPLAN helps parents, carers and teachers see if students are meeting important literacy and numeracy standards. It allows teachers to monitor students' progress over time and to identify areas of strength and areas for development. All schools over the next three years will move to conducting the tests online. Studies have been carried out to ensure both modes of testing, paper based and online,

offer comparable test results. Both test formats assess students on the same curriculum content and all results are placed on the same NAPLAN assessment scale. Our students are ready for the assessments and we are treating it like any other assessment students complete in class.



## Term Planner

The term planner was emailed last term and is on the School app and website. Please refer to it regularly to ensure you don't miss any important events happening in the school. Updates will be provided in the newsletter and reminders placed on the School app. If you have not got the app on your phone please see the Office and we can help you.



Finally I would like to welcome all the new families to Bramfield Park. We have had 12 new students this term which takes us just above our enrolment numbers from the beginning of the year to 311 students. It is very pleasing to hear and see our new students settling in so quickly and making new friends. It is certainly a strength of ours at Bramfield Park that staff, students and families make everyone feel so welcome.

Thought for today: a great attitude becomes a great day which becomes a great month which becomes a great year which becomes a great life  
- Mandy Hale.

*Jayne Murray*  
Principal

## SCHOOL CLOSED

**Friday 25th May & Monday 28th May  
for Staff Development**



## Sports Shorts

Hello everyone and welcome back! Hope the school holidays were safe and enjoyable and that your batteries are recharged for what promises to be a very busy and eventful Term 2. Upper primary students are now preparing for the Winter Carnival, which will be on the 21st of June and will include netball, field hockey and soccer. It's been an exciting start to the term as Mr Lake,



Mr Herbert and Ms Bailey prepare an enthusiastic bunch during Senior Sport, as they are looking to once again field very competitive and determined teams.

During PE classes the students have been starting their lessons with skipping to warm up, followed by cross country practice in preparation for the faction Cross Country carnival on the 28th of June. After that we are straight into basketball fundamentals, such as shooting, dribbling, passing, with the older kids eventually playing 5 on 5 games. The second BEEP Test will be towards the middle of the term in order to fit in with assessment for the semester marking. Finally, the last few weeks of the term we will try to get a head start with athletic carnival preparation, such as team game practice and individual training for long jump, triple jump, ball throw and sprints. A busy term indeed! Thanks for your time and I will keep you updated in the next newsletter.

Sincerely,

Kelly Huston  
PE Coordinator



### COMING UP :

- 10 May - Rugby Clinic
- 11 May - Mother's Day Stall
- 15 May - NAPLAN
- 18 May - Room 9 Assembly

## Canteen

Open every Wednesday. Volunteers welcome

## Kiss and Drive

**Kiss and Drive zones typically allow parents to pick up and drop off children adjacent to the main school entrance. Kiss your child, say goodbye, allow them out and drive away as soon as possible.**

**When using the designated Kiss and Drive zone around schools, never leave your car unattended.**

## Use of Car Park

This is for staff and visitors only and is not to be used to pick up and drop off students without prior consent from the office.



## Entering school grounds



All visitors, including parents dropping off items for their children during the day (eg lunch), are required to report to the office.

## Dental Therapy Forms

If you have received a form from the Dental Therapy Centre this year, please return to the school office ASAP.



### School Banking

Thursday mornings  
8:15 - 8:35 (First Siren) in the  
new undercover area before the bell.



### Uniform Sales

Uniforms are available for sale  
every Friday from **2:30pm**  
(Closes 2:55 pm)

Preloved uniforms may be DONATED and are sold for a gold coin donation

### Playgroup

Every Wednesday  
9:00 - 10:30 am  
Outside Room 8

GOLD COIN donation  
Please bring a piece of fruit to share.



# School Banking Announcement

## WIN A HAMPER

with

**School Banking**

for

**Consistent Savers**

**Make a deposit every week of Term 2 to be put in the draw to win this hamper.**

**The hamper will be drawn on the last day of Term 2.**



**The Commonwealth Bank have changed the way our school gets paid our commission, we now earn \$5 for a single child AFTER they have made 10 DEPOSITS. This is along with an annual commission payment of \$100 as we are a smaller school (1 – 100 bankers).**

**We NEED YOUR HELP!**

**Banking EVERY WEEK will help our school earn a worthwhile commission.**

# Community Announcements

## Tuesday 15 May

10.30am – 11am

**Storytime**

Thornlie Library, Thornlie

3pm – 5pm

**Science Fun at Park Play**

Walter Padbury Playground  
Thornlie

6pm – 8.30pm

**Parent workshop – The Power of Positive Parenting**

Bookings required, call 9398 8720 or email  
CPCGosnells@centrecare.com.au

Don Russell Performing Arts  
Centre, Thornlie

## Wednesday 16 May

9.30am – 11.30am

**Park Play Teddy Bear's Picnic**

Centennial Pioneer Park  
Playground, Gosnells

9.30am – 10am

**Baby Rhyme Time**

Kenwick Library  
Kenwick

10.30am – 11am

**Storytime**

Knowledge Centre  
Gosnells

7pm – 9pm

**Parent workshop – Raising Children in a Multilingual Environment**

Bookings required, call 9397 3119 or email  
jevans@gosnells.wa.gov.au

Huntingdale Community  
Centre, Huntingdale

